



Service Crimpers

Compact, mobile and powerful.



Greaseless

Slide bearings on the crimp tool improve efficiency up to 20%, reduce friction and help keep the tool free of contaminants.



Universal

For all types of hoses and fittings.



Ecoline

Value driven solution for less frequent use.



Ergonomic

Ease of operator use for maximum productivity.



S 2



UA 4



HM 200



S 3



S 4



S 6



S 7



S 8 | S 10 | S 8 i | S 10 i

SL 3-16 M

NEW

Next-generation crimper for low pressure hose assemblies.

Two-in-one solution with integrated die sets Ø5 and Ø15 for DN 03-16.

With this model, UNIFLEX innovates the existing crimper: two integrated die sets in one tool. No more lost time changing the dies sets. Just change the handle and you are already crimping the other size. No risk of losing dies, no dirty hands, no "time lost". With the built-in handle, you can easily carry it anywhere.





Must workshops and mobile service teams do without the power and reliability of large stationary crimpers? UNIFLEX's answer is a definite "no", and our compact, multi-purpose workshop crimpers prove that the advantages of the legendary slide bearing technology can also be used in light-weight, inexpensive equipment that will fit into almost any vehicle and workshop. Numerous drive variants are available.



S 2 M



S 2 P



S 2 A

Ergonomic

The lightest crimper with the biggest opening in its class

Easy to handle

Two-stage hand pump

Compact Design

Fits in any workshop

Ideal for on-site service

Slide bearing technology

No greasing improves cleanliness of machine

Prolongs the machine's lifetime

Maximum productivity with very low maintenance costs

No risk of prematurely damaging the crimping head

End product can be used in sanitary applications without cleaning

20% more capability for crimping stronger or more difficult couplings versus our competition's equivalent crimpers

Consistently accurate crimp result

CE compliant

Packages



QDS 263 B

S 2 Ecoline:

QDS 263 B

S 2 Package = Machine

+ PB Ø 17, 20, 24

+ QDS 26X B

Others:

QDS 263 B

S 2 Package = Machine

+ PB Ø 17, 20, 24, 28, 32, 40

+ QDS 26X B

Accessories



TU Table



PTS System



S 2 M

S 2 M Ecoline

S 2 P

S 2 A

S 2 DC

Technical Data	S 2 M	S 2 M Ecoline	S 2 P	S 2 A	S 2 DC
Crimp force (kN / Ton)	900 / 90	900 / 90	900 / 90	900 / 90	900 / 90
No grease: 20% less friction	✓	✓	✓	✓	✓
SAE R 12 / 4SP* 1 piece fitting	1 ¼"	1 ¼"	1 ¼"	1 ¼"	1 ¼"
SAE R 15 / 4SH* 2 piece fitting	1"	1"	1"	1"	1"
Industrial	1 ¼"	1 ¼"	1 ¼"	1 ¼"	1 ¼"
90° Elbows	1"	1"	1"	1"	1"
Max. Crimp range	63 mm**	63 mm**	63 mm**	63 mm**	63 mm**
Opening	+ 22 mm	+ 22 mm	+ 22 mm	+ 22 mm	+ 22 mm
Opening without dies	77 mm	77 mm	77 mm	77 mm	77 mm
Master dies length (mm)	75 mm	75 mm	75 mm	75 mm	75 mm
Type of dies	263	263	263	263	263
Speed (mm/sec)					
Close	-	-	0,9	5,8	2,4
Crimp	-	-	0,9	0,6	0,2
Drive	manual	manual	pneumatic	1~VAC	12VDC / 24VDC
Oil	0,75 L	0,75 L	2 L	1,5 L	1,5 L
L x W x H (mm)	500 x 420 x 440	170 x 220 x 330	380 x 400 x 310	450 x 450 x 350	450 x 450 x 450
Weight	32 kg	31 kg	33 kg	41 kg	41 kg

* According to the fitting.

** With master dies.

Type of dies

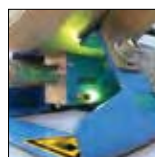
263	
Ø mm	-mm-
6,8	40
9	75
12	75
14	75
17	75
20	75
24	75
28	75
32	75
36	75
40	75
44	75
47	75

Options



S2 M H and S2 M H Ecoline with special pump. (The low pressure delivery volume is around three times higher than the standard.)

Additional Information



On S2 M models, an optical signal is given when the crimp measure is reached. The electric and pneumatic variants have an automatic stop function.



Telescopic hand-lever available.



The powerful workshop crimper UA4 with its capability to crimp a wide range of hoses, up to 1 ¼ SAE R15 or 4 SH (even two-piece versions) offers maximum flexibility at a great value. The open, horizontally slidable compression dies spring open to facilitate crimping of short 90° fittings with long necks. Thanks to the standard-equipped 115 or 230 V single-phase power unit, the UA4 is ready for operation globally. This UNIFLEX crimper is also equipped with the legendary greaseless slide bearing technology.



UA 4

Easy to handle
Openly built for easy crimping of even 90° elbow pieces
Horizontally relocatable stamp for greater accessibility
Divided die sets for quick and easy changes
Powerful crimping tool
Makes crimping of hydraulic hoses possible with 1½" 1 piece and 1¼" 2 pieces 4SP
Compact Design
Fits in any workshop
Slide bearing technology
No greasing improves cleanliness of machine and prolongs its lifetime
Maximum productivity with very low maintenance costs
Flaking cannot stick in grease, no risk of prematurely damaging the crimping head
End product can be used in sanitary applications without cleaning
20% more capability for crimping stronger or more difficult couplings versus our competition's equivalent crimpers
Consistently accurate crimp result
CE compliant

We reserve the right to make technical changes without notice. Options are machine parts that can only be ordered while buying the machine.

Package



QDS 280 B

Package = Machine
 + PB Ø 17,19,22,25,28,32,38,44,50
 + QDS 280 B

Accessories



TU Table



PTS System



Return stroke limiter.
280.7



UA 4



Divided, greaseless crimping die set.

Technical Data	UA 4
Crimp force (kN / Ton)	1350/135
No grease: 20% less friction	✓
SAE R 15 / 4SH* 1 piece fitting	1 ¼"
SAE R 15 / 4SH* 2 piece fitting	1"
SAE R 12 / 4SP* 2 piece fitting	1 ¼"
Industrial	1 ½"
90° Elbows	1 ¼"
Max. Crimp range	57 mm + 8 mm (65 mm)
Opening	15 mm
Opening without dies	73 mm
Master dies length (mm)	70 mm
Type of dies	PB 280
Drive	0,75 kW
Oil	5 L
L x W x H (mm)	380 x 390 x 500
Weight of tool	65 kg
Weight of power unit	25 kg

* According to the fitting.

Type of dies



Ø mm	-mm-
6,8	70
9	70
12	70
14	70
17	70
19	70
20	70
22	70
24	70
25	70
28	70
32	70
36	70
40	70
44	70
47	70
50	70
54	70
57	70



Hose holder:

Hose and dies move simultaneously.
No manual movement necessary.

Additional Information



Tools can be changed cleanly and rapidly using the divided crimping die set.



Easily accessible. The small, compact design makes the UA 4 easy to use and work around.



Easy crimping of elbow pieces.



As the unrivaled classic in the 1 1/4" field, with its narrow, innovative construction, high level of user friendliness, versatility and long service life, the HM 200 sets the unbeatable standard for quality and cost effectiveness. Its compact construction allows for ergonomic working. The use of solid master dies allows you to crimp all types of fittings with the greaseless slide bearing technology, which also reduces maintenance costs.



HM 200



HM 200 Ecoline

Large opening
Openly built for easy crimping of even 90° elbow pieces, without having to remove all the dies
Compact Design
Fits in any workshop
Ideal for on-site service
Slide bearing technology
No greasing improves cleanliness of machine and prolongs its lifetime
Maximum productivity with very low maintenance costs
Flaking cannot stick in grease, no risk of prematurely damaging the crimping head
End product can be used in sanitary applications without cleaning
20% more capability for crimping stronger or more difficult couplings versus our competition's equivalent crimpers
Consistently accurate crimp result
ECOLINE Version
High quality for those new to crimping
CE compliant

We reserve the right to make technical changes without notice. Options are machine parts that can only be ordered while buying the machine.

Package



QDS 239 B



QDC 239.5

Package = Machine

+ PB Ø 17, 20, 24, 28, 32, 40, 44, 50

+ QDS 239 B

+ QDC 239.5

Accessories



TA (A)



QDS 239 C



QDS 239 R



PTS



TU



LUS / LUF



TU Rack PB239




optional: PUU

HM 200

HM 200 Ecoline

Technical Data	HM 200	HM 200 Ecoline
Crimp force (kN / Ton)	1300 / 130	1300 / 130
No grease: 20% less friction	✓	✓
Control	Control A	Control A
SAE R 12 / 4SP* 1 piece fitting	1 ½"	1 ½"
SAE R 15 / 4SH* 2 piece fitting	1"	1"
SAE R 12 / 4SP* 2 piece fitting	1 ¼"	1 ¼"
Industrial	2"	2"
90° Elbows	1 ½"	1 ½"
Max. Crimp range	70 mm**	70 mm**
Opening	+ 30 mm	+ 30 mm
Opening without dies	100 mm	100 mm
Master dies length (mm)	75 mm	75 mm
Type of dies	239	239
Speed (mm/sec)		
Close	3,5	3,5
Crimp	3,5	3,5
Open	5,9	5,9
Noise level	69 dBA	69 dBA
Drive	3 kW	3 kW
Oil	40 L	40 L (DC 4 L)
L x W x H (mm)	800 x 530 x 630	420 x 535 x 520
Power Unit L x W x H (DC)	-	300 x 450 x 560 (450 x 270 x 230)
Weight	140 kg	88 kg
Options		
12 VDC / 24 VDC	-	✓
1 Phase	✓	2,2 kW

Type of dies



239

Ø mm	-mm-
9	50
10	50
12	50
14	60
16	60
17	60
19	60
20	60
22	60
24	60
26	75
28	75
32	75
36	75
40	75
44	75
47	75
50	75
54	75
57	75
62	75

* According to the fitting. ** With master dies.

Additional Information



The micrometer allows you to easily set the crimping diameter.



The large opening stroke allows you to crimp all common types of fittings without changing the crimp dies.



The 12 VDC / 24 VDC units offer space- and weight-saving application options, e.g. for fitting service trucks.



A box with master dies is available in a package.



Due to its narrow and innovative construction, high level of user friendliness and long service life, the S 3 sets new standards for quality and cost effectiveness. Its compact construction allows for ergonomic working. The use of long master dies allows you to crimp 90° elbow fittings up to 1 ¼" with the tried and tested greaseless slide bearing technology, which reduces maintenance costs and increases the product quality.



S 3 Ecoline



S 3 Light Mobileline

Large opening

Openly built for easy crimping of even 90° elbow pieces, without having to remove all the dies

Compact Design

Fits in any workshop

Slide bearing technology

No greasing improves cleanliness of machine and prolongs its lifetime

Maximum productivity with very low maintenance costs

Flaking cannot stick in grease, no risk of prematurely damaging the crimping head

End product can be used in sanitary applications without cleaning

20% more capability for crimping stronger or more difficult couplings versus our competition's equivalent crimpers

Consistently accurate crimp result

CE compliant

We reserve the right to make technical changes without notice. Options are machine parts that can only be ordered while buying the machine.

Package



QDS 239 B



QDC 239.5

Package = Machine

+ PB Ø 17, 20, 24, 28, 32, 40, 44, 50

+ QDS 239 B

+ QDC 239.5

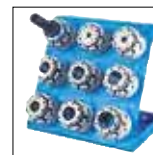
Accessories



TA (A)



QDS 239 C



QDS 239 R



PTS



TU



LUS / LUF



TU Rack PB239



SHS



S 3 Ecoline



S 3 Light



S 3 Light Mobileline

Technical data	S 3 Ecoline	S 3 Light	S 3 L Mobileline
Crimp force (kN / Ton)	1200 / 120	1600 / 160	1600 / 160
No grease: 20% less friction	✓	✓	✓
Control	Control A	Control A	Control A
SAE R 12 / 4SP* 1 piece fitting	1 ½"	1 ½"	1 ½"
SAE R 15 / 4SH* 2 piece fitting	1"	1 ¼"	1 ¼"
SAE R 12 / 4SP* 2 piece fitting	1 ¼"	1 ½"	1 ½"
Industrial	2"	2"	2"
90° Elbows	1 ½"	1 ¼"	1 ¼"
Max. Crimp range	70 mm	70 mm	70 mm
Opening	+ 35 mm	+ 27 mm	+ 27 mm
Opening without dies	105 mm	97 mm	97 mm
Master dies length (mm)	100 mm	100 mm	100 mm
Type of dies	239-xx-Ø	239-xx-Ø	239-xx-Ø
Speed (mm/sec)			
Close	4,0	2,0	1,5
Crimp	4,0	2,0	0,4
Open	6,5	7,6	5,7
Noise level	69 dBA	69 dBA	69 dBA
Drive	3 kW	3 kW	1,8 kW
Oil	35 L	35 L	4 L
L x W x H (mm)	592 x 545 x 672	600 x 550 x 630	430 x 370 x 440
Weight	150 kg	150 kg	110 kg
Options			
12 VDC / 24 VDC	-	-	✓
1 Phase	✓	✓	✓

Type of dies

239-xx-Ø-yy	
Ø mm	-mm-
6,8	50
9	50
10	50
12	65
14	65
16	65
17	65
19	65
20	65
22	65
24	65
26	65
28	80
30	80
31	80
32	80
36	80
38	80
39	80
40	80
44	80
47	100
50	100
54	100
57	100
62	100

* According to the fitting.

Additional Information



The S 3 series is fitted with the clean slide bearing technology.



The S 3 series can be used to crimp short 90° elbow fittings with a long drop. This is impossible for other conventional machines.



With the double pin connection, it is possible to crimp on the front and rear sides of S3 series machines. (not the light model)



The 12 VDC / 24 VDC units offer space- and weight-saving application options, e.g. for fitting service trucks.



As the unrivaled classic in the 1¼" field, with its narrow, innovative construction, high level of user friendliness, versatility and long service life, the S 4 sets the unbeatable standard for quality and cost effectiveness. Its compact construction allows for ergonomic working. The use of solid master dies allows you to crimp all types of fittings with the tried and tested greaseless slide bearing technology, which reduces maintenance costs and increases the product quality.



S 4 C.2



S 4 Ecoline



S 4 DC

Large opening

Openly built for easy crimping of even 90° elbow pieces, without having to remove all the dies

Compact Design

Fits in any workshop

Slide bearing technology

- No greasing improves cleanliness of machine and prolongs its lifetime
- Maximum productivity with very low maintenance costs
- Flaking cannot stick in grease, no risk of prematurely damaging the crimping head
- End product can be used in sanitary applications without cleaning
- 20% more capability for crimping stronger or more difficult couplings versus our competition's equivalent crimpers
- Consistently accurate crimp result

ECOLINE Version

High quality for those new to crimping

CE compliant

We reserve the right to make technical changes without notice. Options are machine parts that can only be ordered while buying the machine.

Package



QDS 239 B



QDC 239.5

- Package = Machine
- + PB Ø 17, 20, 24, 28, 32, 40, 47, 54, 62
- + QDS 239 B
- + QDC 239.5

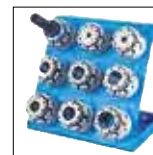
Accessories



TA (A)



QDS 239 C



QDS 239 R



PTS



TU



LUS / LUF



TU Rack PB239



SHS



S 4 Ecoline

S 4 C.2

S 4 DC

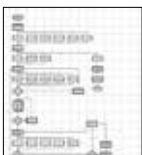
Technical data	S 4 Ecoline	S 4 C.2	S 4 DC
Crimp force (kN / Ton)	1800 / 180	1800 / 180	1800 / 180
No grease: 20% less friction	✓	✓	✓
Control	Control A	Control C. 2 + Touch	Control A
SAE R 12 / 4SP* 1 piece fitting	2"	2"	2"
SAE R 15 / 4SH* 2 piece fitting	1 ½"	1 ½"	1 ½"
SAE R 12 / 4SP* 2 piece fitting	2"	2"	2"
Industrial	2"	2"	2"
90° Elbows	1 ½"	1 ½"	1 ½"
Max. Crimp range	70 mm	70 mm	70 mm
Opening	+ 35 mm	+ 35 mm	+ 35 mm
Opening without dies	105 mm	105 mm	105 mm
Master dies length (mm)	100 mm	100 mm	100 mm
Type of dies	239 - xx	239 - xx	239 - xx
Speed (mm/sec)			
Close	2,7	2,7	0,8
Crimp	2,7	2,7	0,8
Open	4,7	4,7	1,3
Noise level	69 dBA	69 dBA	69 dBA
Drive	3 kW	3 kW	1,8 kW
Oil	35 L	35 L	4 L
L x W x H (mm)	592 x 545 x 672	720 x 600 x 672	509 x 430 x 485
Weight	160 kg	203 kg	132 kg
Options			
12 VDC / 24 VDC	-	-	✓
1~ VAC	✓	✓	-

Type of dies	
Ø mm	-mm-
6,8	50
9	50
10	50
12	65
14	65
16	65
17	65
19	65
20	65
22	65
24	65
26	65
28	80
30	80
31	80
32	80
36	80
38	80
39	80
40	80
44	80
47	100
50	100
54	100
57	100
62	100

* According to the fitting.

C.2 Control: Accessories

Additional Information



Customized software



Electronic caliper



Calibration mandrel



Barcode scanner



The S4 series is fitted with the clean slide bearing technology.



The S 4 series can be used to crimp short 90° elbow fittings with a long drop. This is impossible for other conventional machines.



With the double pin connection, it is possible to crimp on the front and rear sides of S 4 series machines.



The 12 VDC / 24 VDC units offer space- and weight-saving deployment options, e.g. for fitting service trucks.



PFM included with C.2 Control



PS Double foot pedal



UTS/UDL



ULS



807.2



Due to its narrow, innovative construction, high level of user friendliness, and long service life, the S 7 sets the standard for quality and cost effectiveness. Balanced weight and compact engineered design make the S 7 perfect for workshops and on-site service up to 2". The tried and tested greaseless slide bearing technology reduces maintenance costs and increases the product quality.



S 7

Compact Design

Fits in any workshop

Slide bearing technology

No greasing improves cleanliness of machine and prolongs its lifetime

Maximum productivity with very low maintenance costs

Flaking cannot stick in grease, no risk of prematurely damaging the crimping head

End product can be used in sanitary applications without cleaning

20% more capability for crimping stronger or more difficult couplings versus our competition's equivalent crimpers

Consistently accurate crimp result.

CE compliant

We reserve the right to make technical changes without notice. Options are machine parts that can only be ordered while buying the machine.

Package



QDS 239 B



QDC 239.5

Package = Machine

- + PB 17, 20, 24, 28, 32, 40, 44, 50, 57, 71
- + 265.239 L
- + QDS 239 B
- + QDC 239.5



The lightest mobile 2" Service crimper.
Only 90 kg with dies. 2" 4 SP.
Also available in 12 VDC / 24 VDC.



S 7 | S 7 DC

Technical data	S 7 S 7 DC
Crimp force (kN / Ton)	2400 / 240
No grease: 20% less friction	✓
Control	Control A
SAE R 15* / 4SH 1 piece fitting	2"
4SH* 2 piece fitting	2"
SAE R 15* 2 piece fitting	1 ½"
Industrial	2"
90° Elbows	1 ½"
Max. Crimp range	82 mm
Opening	+ 24 mm
Opening without dies	110 mm
Master dies length (mm)	100 mm
Type of dies	239 - xx / 265
Speed (mm/sec)	
Close	Manual
Crimp	0,42
Open	Manual
Noise level	70 dBA
Drive	0,75 kW
Oil	2,3 L
L x W x H (mm)	430 x 367 x 682
Weight	77 kg
Options	
12 VDC / 24 VDC	✓
1 Phase	✓
3 Phase	✓

* According to the fitting.

Type of dies	
239-xx-β-yy	
Ø mm	-mm-
6,8	50
9	50
10	50
12	65
14	65
16	65
17	65
19	65
20	65
22	65
24	65
26	65
28	80
30	80
31	80
32	80
36	80
38	80
39	80
40	80
44	80
47	100
50	100
54	100
57	100
62	100

Type of dies	
265	
Ø mm	-mm-
54	90
57	90
62	90
67	90
71	100
74	100

Accessories



TU Work Bench



PTS System



265.2 Turntable



The micrometer allows you to easily set the crimping dimensions.



The QDS 239 B is available in the package.



Manual closing.



The lightest mobile 2" Service crimper. Also available in 12 VDC / 24 VDC.

Additional Information



Due to its narrow and innovative construction, high level of user friendliness and long service life, the S 6 sets new standards for quality and cost effectiveness. Its compact construction allows for ergonomic working. The use of long master dies allows you to crimp 90° elbow fittings up to 2" with the tried and tested greaseless slide bearing technology, which reduces maintenance costs and increases the product quality.



S 6

Large opening
Openly built for easy crimping of even 90° elbow pieces, without having to remove all the dies
Big crimping tool
Crimping of 3" industry hoses is possible
Compact Design
Fits in any workshop
Slide bearing technology
No greasing improves cleanliness of machine and prolongs its lifetime
Maximum productivity with very low maintenance costs
Flaking cannot stick in grease, no risk of prematurely damaging the crimping head
End product can be used in sanitary applications without cleaning
20% more capability for crimping stronger or more difficult couplings versus our competition's equivalent crimpers
Consistently accurate crimp result
ECOLINE Version
High quality for those new to crimping
CE compliant



S 6 Ecoline



S 6 Light Mobileline



S 6 Ecoline C.2

We reserve the right to make technical changes without notice. Options are machine parts that can only be ordered while buying the machine.

Package

Accessories



QDS 239 B



QDC 239.5



TA (A)



QDS 239 C



QDS 239 R



QDS 239 S



PS Double foot pedal
(Only S 6. Not Ecoline & light models).

Package = Machine

- + PB Ø 17, 20, 24, 28, 32, 40, 44, 50, 57, 71
- + 266.239L
- + QDC 239.5
- + QDS 239 B



TU Work Bench



LUS / LUF



TU Rack PB239



SHS



PTS



S 6

S 6 Light

S 6 Light Mobileline

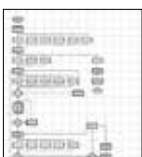
Technical data	S 6 Ecoline	S 6	S 6 Light	S 6 L Mobileline
Crimp force	2000 / 200	2000 / 200	2400 / 240	2400 / 240
No grease: 20% less friction	✓	✓	✓	✓
Control	Control A	Control A	Control A	Control A
SAE R 15* / 4SH 1 piece fitting	2"	2"	2"	2"
4 SH* 2 piece fitting	2"	2"	2"	2"
SAE R 15* 2 piece fitting	1 ½"	1 ½"	1 ½"	1 ½"
Industrial	3"	3"	3"	3"
90° Elbows	2"	2"	2"	2"
Crimp range	100 mm	100 mm	100 mm	100 mm
Opening	+ 45 mm	+ 45 mm	+ 41 mm	+ 41 mm
Opening without dies	147 mm	147 mm	143 mm	143 mm
Master dies length (mm)	110 mm	110 mm	110 mm	110 mm
Type of dies	239 - xx / 266	239 - xx / 266	239 - xx / 266	239 - xx / 266
Speed (mm/sec)				
Close	4,9	9,7	30 / 1,8	22 / 1,1
Crimp	2,3	2,2	1,8	0,3
Open	8,2	16	10,6 / 30	22 / 6,5
Noise level	69 dBA	69 dBA	69 dBA	69 dBA
Drive	4 kW	4 kW	3 kW	1,8 kW
Oil	50 L	70 L	35 L	4 L
L x W x H (mm)	700 x 600 x 735	690 x 600 x 1350	600 x 550 x 750	505 x 430 x 490
Weight	248 kg	374 kg	190 kg	172 kg
Options				
12 VDC / 24 VDC	-	-	-	✓
1 Phase	✓	-	✓	✓
3 Phase	✓	✓	✓	-
C.2 Control	✓	✓	-	-

Type of dies		
Ø mm	-mm-	-mm-
	239-xx-Ø-yy	266
6,8	50	
9	50	
10	50	
12	65	
14	65	
16	65	
17	65	
19	65	
20	65	
22	65	
24	65	
26	65	
28	80	
30	80	
31	80	
32	80	
36	80	
38	80	
39	80	
40	80	
44	80	
47	100	
50	100	
54	100	
57	100	
62	100	110
67		110
71		110
74		110
78		110
84		110
86		110
92		110

* According to the fitting. ** Intermediate dies not required: only S 6.

C.2 Control: Accessories

Additional Information



Customized software



Electronic caliper



Calibration mandrel



Barcode scanner



The micrometer allows you to easily set the crimping dimensions.



The S 6 series can be used to crimp short 90° elbow fittings with a long drop. This is impossible for other conventional machines.



The new, user-friendly Control C.2 is available as an option.



The 12 VDC / 24 VDC units offer space- and weight-saving deployment options, e.g. for fitting service trucks.



PFM included with C.2 Control



PS Double foot pedal



UTS/UDL



ULS



807.2



Due to its narrow and innovative construction, high level of user friendliness and long service life, the S 8 i / 10 i sets new standards for quality and cost effectiveness. Its compact construction allows for ergonomic working. The use of long master dies allows you to crimp 90° elbow fittings up to 2" with the tried and tested greaseless slide bearing technology, which reduces maintenance costs and increases the product quality.



S 8 i Ecoline + S 10 i Ecoline



S 8 i + S 10 i

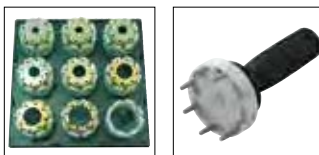


S 8 i C.2 + S 10 i C.2

Large opening
Openly built for easy crimping of even 90° elbow pieces, without having to remove all the dies
Big crimping tool
Crimping of 4" industry hoses is possible
Compact Design
Fits in any workshop
Slide bearing technology
No greasing improves cleanliness of machine and prolongs its lifetime
Maximum productivity with very low maintenance costs
Flaking cannot stick in grease, no risk of prematurely damaging the crimping head
End product can be used in sanitary applications without cleaning
20% more capability for crimping stronger or more difficult couplings versus our competition's equivalent crimpers
Consistently accurate crimp result
ECOLINE Version
High quality for those new to crimping
CE compliant

We reserve the right to make technical changes without notice. Options are machine parts that can only be ordered while buying the machine.

Package



QDS 239 B

QDC 239.5

Package = Machine

- + PB Ø 17, 20, 24, 28, 32, 40, 44, 50, 57, 71
- + 237L.239.2
- + QDS 239 B
- + QDC 239.5

Accessories



QDS 239 C



QDS 239 S



TA



TU Rack PB239



PS Double foot pedal
(not Ecoline model).



SHS



PTS



LUS / LUF



Oil Cooler (OC S3/4/6/8/10)



S 8 i

S 10 i

S 8 i Ecoline | S 10 i Ecoline

Technical data	S 8 i	S 8 i Ecoline	S 10 i	S 10 i Ecoline
Crimp force	2200 / 220	2200 / 220	2800 / 280	2800 / 280
No grease: 20% less friction	✓	✓	✓	✓
Control	Control A	Control A	Control A	Control A
SAE R 15* / 4SH 1 piece fitting	2"	2"	2"	2"
4 SH* 2 piece fitting	2"	2"	2"	2"
SAE R 15* 2 piece fitting	1 ½"	1 ½"	2"	2"
Industrial	4"	4"	4"	4"
90° Elbows	2"	2"	2"	2"
Max. Crimp range	139 mm	139 mm	139 mm	139 mm
Opening	+ 45 mm	+ 45 mm	+ 45 mm	+ 45 mm
Opening without dies	190 mm	190 mm	190 mm	190 mm
Master dies length (mm)	126 mm	126 mm	126 mm	126 mm
Type of dies	239-xx / 237 L**	239-xx / 237 L**	239-xx / 237 L**	239-xx / 237 L**
Speed (mm/sec)				
Close	6,1	4,8	6,1	4,8
Crimp	1,7	2,3	1,7	2,3
Open	10,3	7,9	10,3	7,9
Noise level	63 dBA	63 dBA	63 dBA	63 dBA
Drive	4 kW	4 kW	5,5 kW	4 kW
Oil	55 L	50 L	55 L	50 L
L x W x H (mm)	690 x 600 x 1400	700 x 600 x 845	690 x 600 x 1400	700 x 600 x 845
Weight	390 kg	372 kg	390 kg	372 kg
Options				
Control C.2	✓	-	✓	-

Type of dies	
	239-xx-Ø-yy
Ø mm	-mm-
6,8	50
9	50
10	50
12	65
14	65
16	65
17	65
19	65
20	65
22	65
24	65
26	65
28	80
30	80
31	80
32	80
36	80
38	80
39	80
40	80
44	80
47	100
50	100
54	100
57	100
62	100

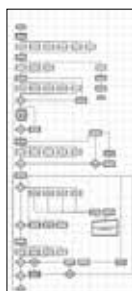
Type of dies	
	237 L
Ø mm	-mm-
54	118
57	118
62	118
67	118
71	118
74	118
78	118
84	118
86	118
90	118
96	118
103	118
106	126
111	126
116	126
121	126
126	126
131	126

* According to the fitting.

** Intermediate dies not required.

C.2 Control: Accessories

Additional Information



Customized software



Electronic caliper



Calibration mandrel



Barcode scanner



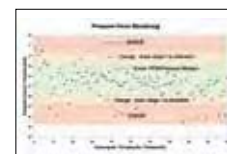
PS Double foot pedal



The S 8 / 10 series is fitted with the clean slide bearing technology.



The micrometer allows you to easily set the crimping dimensions.



PFM included with C.2 Control.



UTS/JDL



ULS



807.2



Due to its narrow and innovative construction, high level of user friendliness and long service life, the S 8 i x l / 10 i x l sets new standards for quality and cost effectiveness. Its large opening (+61 mm) fits industrial hoses with large flanges. The use of long master dies allows you to crimp 90° elbow fittings up to 2" with the tried and tested greaseless slide bearing technology, which reduces maintenance costs and increases the product quality.



S 8 i x l Ecoline + S 10 i x l Ecoline



S 8 i x l + S 10 i x l



S 8 i x l C.2 + S 10 i x l C.2

Large opening
Openly built for easy crimping of even 90° elbow pieces, without having to remove all the dies
Big crimping tool
Crimping of 4" industry hoses is possible
Compact Design
Fits in any workshop
Slide bearing technology
No greasing improves cleanliness of machine and prolongs its lifetime
Maximum productivity with very low maintenance costs
Flaking cannot stick in grease, no risk of prematurely damaging the crimping head
End product can be used in sanitary applications without cleaning
20% more capability for crimping stronger or more difficult couplings versus our competition's equivalent crimpers
Consistently accurate crimp result
ECOLINE Version
High quality for those new to crimping
CE compliant

We reserve the right to make technical changes without notice. Options are machine parts that can only be ordered while buying the machine.

Package



GDS 239 B



GDC 239.5

Package = Machine
 + PB Ø 17, 20, 24, 28, 32, 40, 44, 50, 57, 71
 + 237L.239.2
 + GDS 239 B
 + GDC 239.5

Accessories



GDS 239 C



GDS 239 S



TA



TU Rack PB239



PS Double foot pedal
(not Ecoline model).



SHS



PTS



LUS / LUF



Oil Cooler (OC S3/4/6/8/10)





S 8 i xl

S 10 i xl

S 8 i xl Ecoline | S 10 i xl Ecoline

Technical data	S 8 i xl	S 8 i xl Ecoline	S 10 i xl	S 10 i xl Ecoline
Crimp force	2200 / 220	2200 / 220	2800 / 280	2800 / 280
No grease: 20% less friction	✓	✓	✓	✓
Control	Control A	Control A	Control A	Control A
SAE R 15* / 4SH 1 piece fitting	2"	2"	2"	2"
4 SH* 2 piece fitting	2"	2"	2"	2"
SAE R 15* 2 piece fitting	1 1/2"	1 1/2"	2"	2"
Industrial	4"	4"	4"	4"
90° Elbows	2"	2"	2"	2"
Max. Crimp range	139 mm	139 mm	139 mm	139 mm
Opening	+ 61 mm	+ 61 mm	+ 61 mm	+ 61 mm
Opening without dies	200 mm	200 mm	200 mm	200 mm
Master dies length (mm)	126 mm	126 mm	126 mm	126 mm
Type of dies	239-xx-Ø / 237 L**	239-xx-Ø / 237 L**	239-xx-Ø / 237 L**	239-xx-Ø / 237 L**
Speed (mm/sec)				
Close	30/6,0	30/3,0	30/6,0	30/3,0
Crimp	1,4	1,4	1,4	1,4
Open	30/17	30/8,5	30/17	30/8,5
Noise level	63 dBA	63 dBA	63 dBA	63 dBA
Drive	4 kW	4 kW	5,5 kW	4 kW
Oil	70 L	50 L	70 L	50 L
L x W x H (mm)	570 x 720 x 1400	630 x 700 x 850	570 x 720 x 1400	630 x 700 x 850
Weight				
Options				
Control C.2	✓	-	✓	-

Type of dies	
	239-xx-Ø-yy
Ø mm	-mm-
6,8	50
9	50
10	50
12	65
14	65
16	65
17	65
19	65
20	65
22	65
24	65
26	65
28	80
30	80
31	80
32	80
36	80
38	80
39	80
40	80
44	80
47	100
50	100
54	100
57	100
62	100

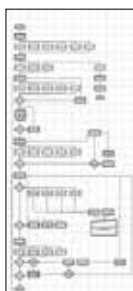
Type of dies	
	237 L
Ø mm	-mm-
54	118
57	118
62	118
67	118
71	118
74	118
78	118
84	118
86	118
90	118
96	118
103	118
106	126
111	126
116	126
121	126
126	126
131	126

* According to the fitting.

** Intermediate dies not required.

C.2 Control: Accessories

Additional Information



Customized software



Electronic caliper



Calibration mandrel



Barcode scanner



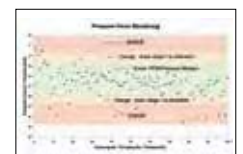
PS Double foot pedal



The S 8 / 10 series is fitted with the clean slide bearing technology.



The micrometer allows you to easily set the crimping dimensions.



PFM included with C.2 Control.



LTS/JDL



ULS



807.2