



Test Benches & Cleaning Machines

Reliable, clean and eco-friendly.



Universal

For all types of hoses and fittings.



Ecoline

Value driven solution for less frequent use.



Integrated Tank

Saves work space and is quiet.



P 160 Ecoline



P 160



P 200



P 300



P 350



RG 2



RG 10





Hose lines that cannot withstand the high pressure for which they are designed can cause serious damage, resulting in high costs - often higher than the price of a test bench. Why take a risk that can be easily avoided?

By testing the quality of your products, you opt for safety. The P 160 or P 160 ECOLINE workshop test benches allow for the efficient and safe final inspection and testing of hose lines. They are easy to operate and quickly become part of your routine procedures.



P 160



P 160 Ecoline

Quality and safety

Fully enclosed test chamber

Also suitable for static pressure testing of various hydraulic components such as valves, hydraulic cylinders, housings, quick-release couplings, etc.

Safety valve – when the hood is opened, all pressure is automatically released within 1/10 second

Hood with gas springs and transparent Makrolon® safety pane

Environmentally friendly test medium (water-oil emulsion)

Easy and safe to operate

Test bench can be retrofitted with extension element (P 160)

Logging software/printer available as optional equipment (Control B+ Touch) (P 160)

Compressed air filter with condenser

Innovative technology for fast processing

Parts to be tested (hose lines) can be inserted quickly by means of our Steck-O-System and without any time-consuming preparation or modifications to the tank

Fast filling and automatic pressure release of tested parts

CE compliant

Hood with gas springs and transparent Makrolon® safety pane

We reserve the right to make technical changes without notice. Options are machine parts that can only be ordered while buying the machine.

Package

- P 160 Package /
- P 160 Ecoline Package
- Machine
- + Steck-O-Adapter metric 405.901
- + Steck-O-Adapter imperial 405.902
- + Anticorrosion additive EM 10 L

Standard



Steck-O-System

Accessories



4 Steck-O-Adapter 405.6.



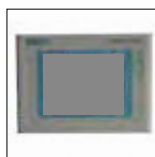
P 160 Ecoline

P 160

Technical data	P 160 Ecoline	P 160
Test pressure	150 - 1300 bar	150 - 1300 bar
Drive	Intensifier	Intensifier
Flow	1,1 L / min	1,1 L / min
Capacity	7 bar, 20 NI / min	7 bar, 20 NI / min
Tank dimensions	1200 x 600 x 250 mm	1590 x 795 x 370 mm
Test bench dimensions	1400 x 600 x 1200 mm	2210 x 950 x 1325 mm
Reservoir capacity	33 L	100 L
Alternative drive only with pre filling pump 405.904 / 405.914	-	0,38 kW, 400V 50Hz 3Ph
Colour	RAL 5012 Blue	RAL 5012 Blue, RAL 7021 Grey
Weight	120 kg empty	210 kg empty
Noise level	72 dBA	72 dBA
Accessories		
Suction filter	✓	✓
Air preparation unit	✓	✓
Steck-O-Adapter (s-series only)	DN 4/6/8/10/12/ G 1/2" 405.901	DN 4/6/8/10/12/ G 1/2" 405.901
Steck-O-Adapter (s-series only)	R 1/4"/ 3/8"/ 1/2"/ 3/4"/ G 1/2" 405.902	R 1/4"/ 3/8"/ 1/2"/ 3/4"/ G 1/2" 405.902
Anticorrosion additive	EM 10 I	EM 10 I
Options		
High pressure* (Steck-O-System not available)	-	150 - 3000 bar
Low pressure*	-	20 - 1300 bar

* Only one of the two options possible.

Options



CONTROL B + Touch
(only for P 160)



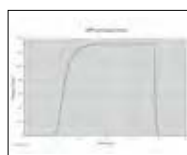
The P 160 is also available in stainless steel



P 160 / P 200 extension element
407.3150: Total chamber length 3600 mm
407.3250: Total chamber length 4400 mm



UPP Pressure Sensor for test benches.



Additional Information



Steck-O-System:

- Clean, quick and reliable connection
- Push-in system for easy assembly
- Ample space in chamber
- Adapter for fast connection



The P 200 test bench with digital Control B+ Touch control and tight clamping system makes testing not only easier and quicker but also extremely flexible. Enter all test parameters at the user-friendly menu control and save them, if required, with the relevant product number.

The test parameters for a product can then be reloaded at the push of a button, reducing tooling time while ensuring reproducibility. The patented tight clamping system does away with screws and threaded adapters. Pressure testing reveals any defects in the material or assembly at the earliest possible time.



P 200

Quality and safety

- Fully enclosed test chamber
- Also suitable for static pressure testing of various hydraulic components such as valves, hydraulic cylinders, housings, quick-release couplings, etc.
- Safety switch - when the hood is opened, all pressure is automatically released within 1/10 second
- Environmentally friendly test medium (water-oil emulsion)
- Easy and safe to operate
- Test bench can be retrofitted with extension element
- Up to 120 tests per hour for a max. length of 2500 mm (DN 12-800 mm)

Innovative documentation management

- Time-saving product parameter memory
- Proper documentation and controlling
- Test reports printed on printer (optional)

CE compliant

- Hood with gas springs and transparent Makrolon® safety pane

We reserve the right to make technical changes without notice. Options are machine parts that can only be ordered while buying the machine.

Package

- Machine
- + set of sealing cones and clamp adapters (406.4)
- + Anticorrosion additive EM 10 L



CONTROL B + Touch

Options



Laser printer
black ink
DIN A4
888.074



Pressure filter
600.901 5µm



VA (Stainless Steel)



P 200 extension element
407.3150: Total chamber length 3600 mm
407.3250: Total chamber length 4400 mm



P 200

Technical data	P 200
Test pressure	150 - 1300 bar
Control	Control B + Touch
Drive	Intensifier
Flow rate (effectively)	5 L / min
Air supply	7 bar, 20 NI / min
Tank dimensions	1590 x 795 x 370 mm
Test bench dimensions	2210 x 950 x 1325 mm
Reservoir capacity	100 L
Colour	RAL 5012 Blue, RAL 7021 Grey
Weight	210 kg empty
Noise level	72 dBA
Electrical connection	400 V 50 Hz 3 Ph
Options	
High pressure	150 - 3000 bar
Low pressure	20 - 1300 bar
Stainless steel tank	✓
Extended version on request	✓

Accessories	
Suction filter	✓
Air preparation unit	✓
Holding disc	HS 400 Ø 8-10 / 10-12 / 12-15 / 15-18 / 18-21 / 21-24 / 24-27 / 27-30 / 30-33 / 33-36 / 36-39 / 39-42
Sealing cones	DSP 400-2 (30°- Ø 2,2) DSP 400-3 (30°- Ø 3,8) DSP 400-4 (80°- Ø 2,2) DSP 400-5 (80°- Ø 3,8) DSP 400-7 (30°- Ø 11) DSP 400-8 (80°- Ø 6,5)
Blind sealing cones	BDSP 400-1 (30°- Ø 2,2) BDSP 400-6 (80°- Ø 2,2) BDSP 400-9 (30°- Ø 11)
Sealing disc	DS 400-1 (120°)
Anticorrosion additive	EM 10 I



90° connection.



The test bench caters to a wide range of fittings and hoses.

Additional Information



Benjo connection.



Tight clamping system for easy test.



Test logs and reports for proper documentation.

A Handful of Sealing Cones Replaces Hundreds of Threaded Adapters:

Loading: One end of the hose is inserted into a fixed test head, the other into an adjustable test head. A hydraulic unit supplies the precisely adjustable clamping pressure to the sealing heads.

Testing: The flooding pump rinses and deaerates the hose line. After the lid is locked, the preset clamping and test pressure is generated automatically.

Blowing out: The pressure test is completed with one push button, i.e. the test pressure is reduced and the blow-out operation is started automatically to purge out the test fluid.

Test record: A hydrostatic pressure test can be carried out and recorded with the microprocessorbased UNIMATICControl-B plus system.



Testing has never been easier and quicker. With the P 300, you can perform precision tests of hoses of up to 2500 mm in length and with pressures up to 1000 bar.

Test up to 120 hoses per hour, making use of 4 parallel test lines and our quick-clamping system. You can choose between automated and manual setup mode. The P 300 comes with a number of standard features such as an internal lighting and a portable power aggregate, and caters to individual test logging.



P 300



P 300 Aggregate

Innovation and quality

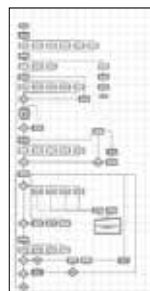
Testing of up to 120 hoses per hour
4 parallel test lines
Combination of two test chambers (mirror arrangement) (optional)
Fast workflow thanks to separately running test chambers (for alternate setup and testing)
Quick-clamping system holding up to 4 hoses for parallel testing with customized settings
Internal lighting system, adjustable machine feet and top-quality internal gear pump
Quick changeover between automated and manual setup mode
Separate portable power aggregate (with 2 m connecting hoses)
Max. hose length 2500 mm

Safety and CE conformity

Automatic closing of test chamber
Large inspection window made with transparent Makrolon®
Display for bubble-free flooding on aggregate
Customisable test logs and reports (for storage and printing)

We reserve the right to make technical changes without notice. Options are machine parts that can only be ordered while buying the machine.

C.2 Control: Accessories



Customized software



UTS/UDL



ULS



Barcode scanner

Options



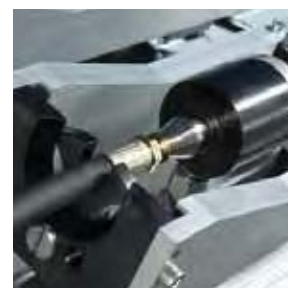
- 409.1 Deventilation of residual pressure
- 409.2 Manual door closing for tight circuit
- 409.3 Low pressure 50-1000 bar



P 300

Technical data	P 300
Test pressure	100 - 1000 bar
Control	C.2 Control
Drive	3 kW hydraulic aggregate with air pressure booster
Flow rate (effectively)	13 L / min
Tank dimensions open / closed	3750 x 2400 x 870 mm / 3750 x 1450 x 870 mm
Aggregate dimensions	830 x 740 x 1340 mm
Reservoir capacity	140 L
Colour	RAL 5012 Blue, RAL 7021 Grey
Weight of tank	1000 kg (empty)
Weight of power unit	200 kg (empty)
Noise level	70 dBA
Max. hose length	up to 2500 mm
Test medium	Test oil
Noise	70 dBA
Accessories	
Pressure + return filter	✓
Air preparation unit	✓
Sealing cone set	✓
Options	
Second chambers are possible	✓

Standard
Sealing cone set
888.074 Laser printer A4/ SW
USB interface/port
Pressure filter 12 µm
Return filter 12 µm
Compressed air maintenance unit



2 clamping discs per head, catering to various diameters (OD 8-42 mm).

For hose assembly up to DN19 (3/4"). Other sizes on demand.

Additional Information



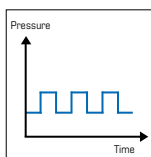
Sealing cone set (standard), DN 2.5 - 22mm, 6 cones.



The height of the P 300 can be adjusted.



Axially adjustable quick-change system with adjustable rotating head.



Dynamic test.

- Rapid hose clamping system for the admission of up to four hoses with simultaneous checking (variable setting)
- Parallel test lines – 4 test lines per chamber
- Automatic starting of the given pressure values
- Two test chambers are possible – mirroring (one is loaded while a second chamber is testing)
- Test chamber standard size 3600 mm
- Depending on different factors (flooding time, length + diameter of the hoses) you can test approx. 120 hoses per hour
- Adjustable height
- Fitting cones 3/4" (DN 2,5 – 22 mm) easy to change via simple unliking (6 different cone sizes are available in standard package)



Is testing of large industrial hose or long hydraulic hose possible in a safe and practical manner? Our new P 350 test bench unifies our years of experience with your advanced requirements for special hose equipment. The extra-large test chamber gives you the space you need for your challenge. Pallets with hoses as well as large, heavy hose coils can be easily supplied to the chamber by forklift. Hose samples are connected easily with adapter hose and quick connection to pressure ports. The P 350 comes with a number of standard features such as internal lighting and a portable power aggregate, and caters to individual test logging.



P 350



P 350_Chamber-3600mm

Innovation and quality

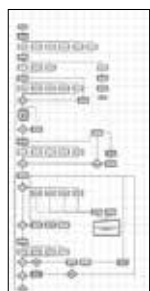
- Testing of up to 120 hoses per hour
- 4 parallel test lines
- Combination of two test chambers (mirror arrangement)
- Fast workflow thanks to separately running test chambers (for alternate setup and testing)
- Quick-clamping system holding up to 4 hoses for parallel testing with customized settings
- Internal lighting system
- Quick changeover between automated and manual setup mode
- Separate portable power aggregate (with 2 m connecting cable)

Safety and CE conformity

- Rigid doors with safety switches
- Large inspection window made with transparent Makrolon®
- Display for bubble-free flooding on aggregate
- Customisable test logs and reports (for storage and printing)

We reserve the right to make technical changes without notice. Options are machine parts that can only be ordered while buying the machine.

C.2 Control: Accessories



Customized software



UTS/UDL



ULS



Barcode scanner

Options



- 409.1 Deventilation of residual pressure
- 409.2 Manual door closing for tight circuit
- 409.3 Low pressure 50-1000 bar



P 350

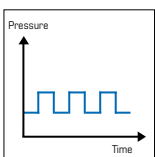
Technical data	P 350
Test pressure	150 - 1000 bar
Control	Control C.2
Drive	Diaphragm pump + Intensifier
Flow rate (effectively)	12.5 L/min
Reservoir capacity	P 350 Container: 1040 L P 350_Chamber-3600: 330 L
Chamber dimensions	P 350 Container: External: 2100 x 2170 x 2650 mm Internal: 1950 x 1950 x 2200 mm P 350_Chamber-3600: External: 4100 x 950 x 1325 mm Internal: 3600 x 795 x 370 mm
Aggregate dimensions	850 x 1390 x 810 mm
Colour	RAL 5012 blue / RAL 7021 grey / RAL 9002 grey-white
Weight of chamber	P 350 Container: 650 kg P 350_Chamber-3600: 390 kg
Weight of power unit	210 kg
Noise level	75 dBA
Test medium	Water-oil emulsion
Accessories	
Pressure and return filter	✓
Air preparation unit	✓
Quick connector adapter set	✓
Options	
Second chambers are possible	✓

Standard

Quick connector set
Automatic pressure control
Pressure filter 5 µm
Suction filter 100 µm
Anticorrosion additive EM 10 L
Fluid flow inspection glass
Integrated tank



P 350 Aggregate



Dynamic test.



UNIFLEX cleaning machines effectively remove residue and scale from hose cutting, crimping and press fitting.



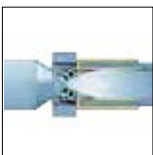
RG 10



RG 2

We reserve the right to make technical changes without notice. Options are machine parts that can only be ordered while buying the machine.

Accessories



UNIFLEX cleaning machines effectively remove residue and scale from hose cutting, crimping and press fitting.



Flushing cone



Suction filter



Pressure filter
600.901 5 µm



RG 2



RG 10

Technical data	RG 2	RG 10
Drive	Diaphragm pump, 7 bar Air	Diaphragm pump, 7 bar Air
Maximum flow rate	25 l/min	180 l/min
Pressure filter	5 µm	10 µm
Air filter	5 µm	5 µm
Max. air consumption	100 NI/min	250 NI/min
Working range	up to 1 1/4" ID	up to 2" ID
Max. length, depending on bore size	2,5 m / 8 feet	20 m / 65 feet
Tank capacity	38 L	215 L
Working area	350 x 750	800 x 1600
Cleaning agent	Non-toxic and corrosion-free emulsion, water based.	Non-toxic and corrosion-free emulsion, water based.
L x W x H (mm)	960 x 435 x 940	2000 x 840 x 1050
Weight (empty)	55 kg	160 kg
Accessories		
Hakupur 10 L - RG 2+RG 10 - concentrated cleaning agent		
PJ_30.10.76 - RG 10 - Filter cartridge 5 µm		
PJ_30.10.60 - RG 10 - Filter cartridge 10 µm		
600.4 - RG 2 - Filter cartridge 5 µm		
600.5 - RG 2 - Filter cartridge 12 µm		